



Helix Road, Brixton, SW2

1 bedroom flat - conversion for sale

£299,950

Share of Freehold

Property Details

This bright and airy one double bedroom flat is nestled on the top floor of one of the handsome Victorian terraces on Helix Road, a highly sought-after residential road, perfectly located in the heart of the Josephine conservation area, a ten-twelve minute walk from the amenities and transport links in central Brixton. The spacious double bedroom is tucked away quietly to the rear of the property, with views across the leafy neighbouring gardens. Sitting adjacent is the separate reception room which is flooded with natural light through the skylight and the glass loft hatch which provides convenient access to loft space. There is another section of the loft which is accessed through the modern bathroom. Last but not least the kitchen provides all you need in terms of worktop and storage space.

Features

- One double bedroom
- Victorian conversion
- Bright and airy throughout
- Access to substantial loft space
- Popular quiet residential street
- A short walk from Brockwell Park
- A ten-twelve minute walk to Brixton tube station
- Share of freehold

Council tax band B EPC rating D (59)



Helix Road, Brixton, SW2



1 Bedroom Flat

Approx internal area:

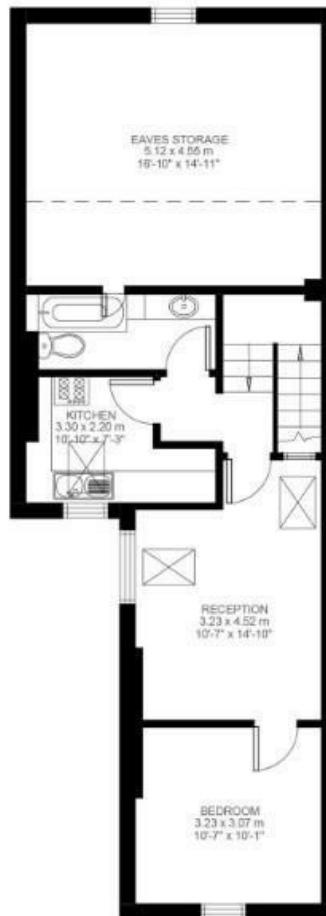
454 sqft 42 sqm

(EXCLUDING EAVES STORAGE)
EAVES STORAGE 23.29 SQ.M / 251 SQ.FT
INCLUSIVE TOTAL AREA 65.29 SQ.M / 703 SQ.FT

While we do try our very best,
floor plans are produced as a
guide only and we take no
responsibility for the precise
accuracy with which any
property is represented



First Floor



Second Floor



Helix Road, Brixton, SW2

